



First in Quality, First in Service.

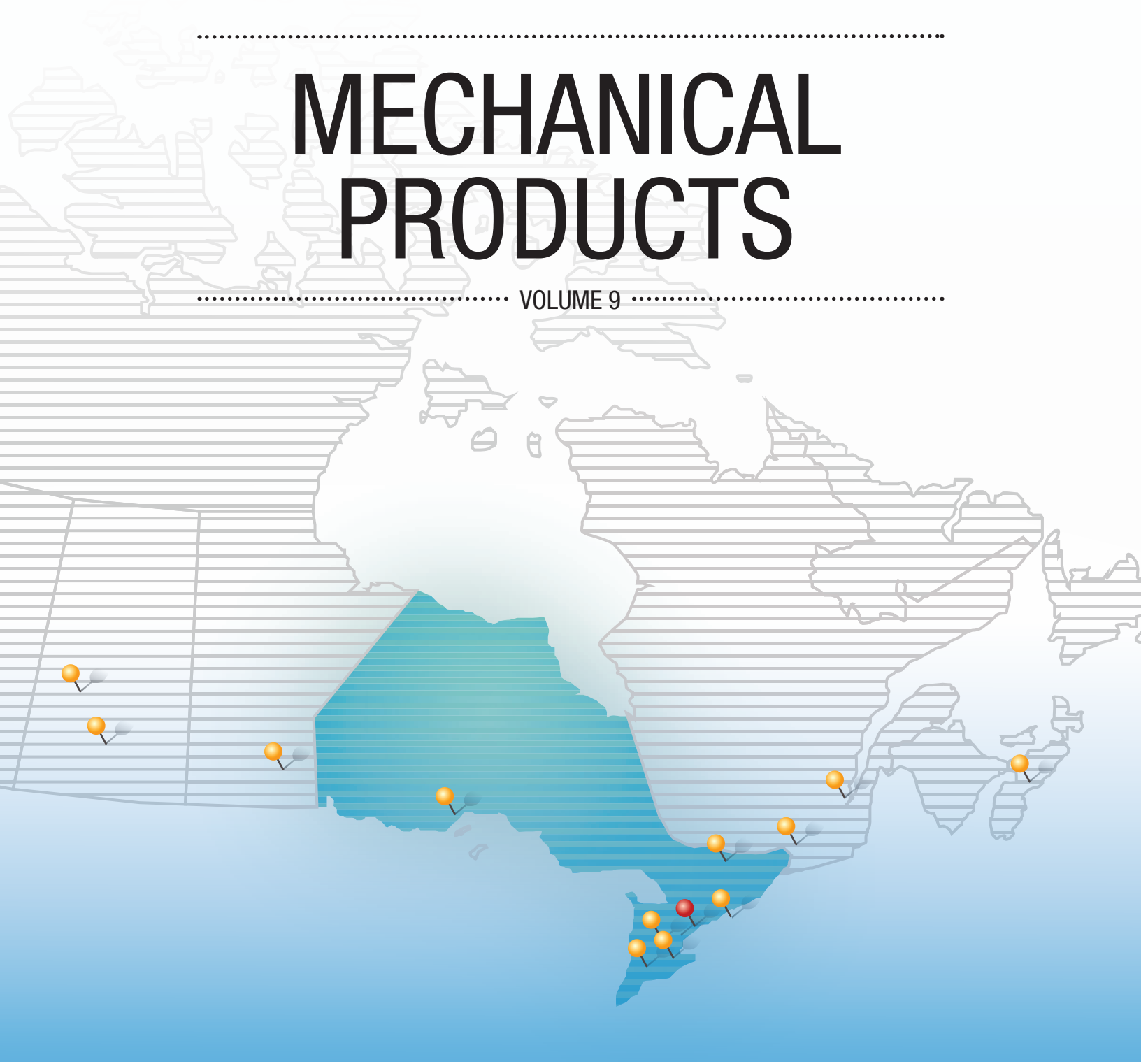
★ Since ★
1961

Serving the
Greater
Toronto Area

e.h.price

MECHANICAL PRODUCTS

VOLUME 9

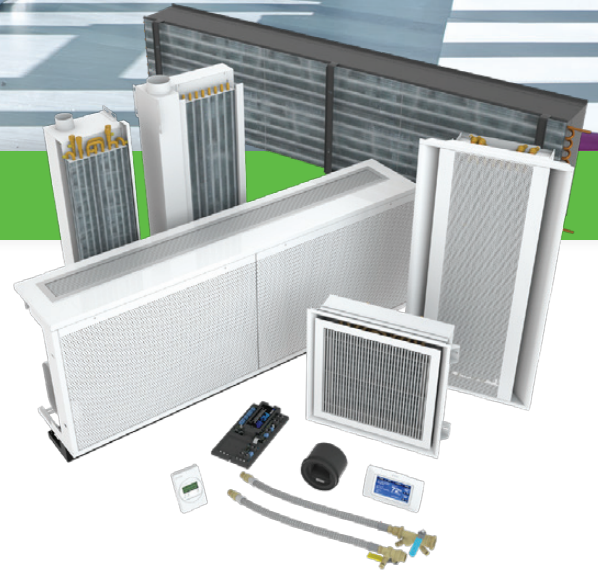


TORONTO



Above: Chilled Beams

ACTIVE & PASSIVE BEAMS



BUILDING APPLICATIONS

- + Thermal comfort is a major design consideration
- + Spaces with high sensible heat releases
- + Spaces requiring high indoor air quality (100% fresh air)
- + Spaces requiring energy conservation

AIR-WATER SYSTEM BENEFITS

- + Reduced system power consumption
- + Reduced maintenance costs
- + Environmental quality
 - Improved indoor air quality
 - Improved thermal comfort
- + Reduced mechanical footprint

ACTIVE & PASSIVE BEAM TYPES

- + Active linear, vertical, horizontal, modular, perimeter induction units, exposed, and floor mounted cabinets
- + Passive linear beams
- + Passive beams with integrated return



UNITECH
www.unitechair.com

- Units ranging from 2,000 CFM to 300,000 CFM (Catalogued from 5,000 CFM to 91,000 CFM)
- Maximum sound attenuation with four inch, double wall construction
- Penthouse units available up to 400,000 CFM
- Factory-installed controls and piping available
- Cooling Options: Hydronic or DX (Packaged Air-Cooled or Water-Cooled available)
- Heating Options: Hydronic, Steam, Electric or Gas
- Humidification Options: Gas, Electric or Steam-to-steam
- Knockdown construction available
- Custom Air Handlers



Greenheck
www.greenheck.com

- Direct and Indirect Gas-Fired Make-Up Air Units
- Indoor Air Handling Units
- Fan Coils
- Heat Recovery Products
- Packaged Cooling Option
- Coils
 - Chilled Water
 - DX Evaporator
 - Condenser
 - Non-Freeze Steam Distributing
 - Booster / Duct Mounted
 - Hot Water
 - Heat Reclaim
 - Standard Steam
- ERV - Energy Recovery Ventilator
 - 400 to 12,000 cfm
 - 1.5 in. wg external static pressure
 - Louvered intake weatherhood lowers supply air intake velocities to prevent rain and snow from being pulled into the unit
 - 2-inch outdoor and return air filters with a MERV 8 (30% efficiency) rating
 - 18 gauge outer wall construction
 - Multiple energy wheel options allow selection of a unit by what is critical in the design or application:
 - Effectiveness
 - Recovery Efficiency Ratio (RER)
 - Low blower horsepower
- ERH - Energy Recovery Ventilator with Heating
 - 10,000 cfm
 - 1.5 in. wg external static pressure
 - Fresh outdoor air is pre-conditioned by the total enthalpy wheel, recovering a majority of the energy from the exhaust air
 - Saves 3-4 tons of cooling per 1000 cfm
 - Saves 50-60 MBH of heating per 1000 cfm
 - The heating section further tempers cold outdoor air to desired conditions



SolutionAir
www.solutionairgroup.com

- Air-Cooled DOAS Units
 - Up to 20,000 CFM
 - Heating Options: Gas, Electric, Steam and Hydronic
 - Cooling Options: Hydronic and DX (Packaged or Split)
 - Energy Recovery Options
- Customizable Air Handlers
 - Up to 100,000 CFM
 - Indoor / Outdoor Construction
 - Single / Double Wall Construction
 - Heating Options: Gas, Electric, Steam and Hydronic
 - Cooling Options: Hydronic and DX (Packaged or Split)
 - Energy Recovery
 - Packaged Control
- Make-Up Air Units
 - Direct Fired: 250 – 15,000 MBH
 - Indirect Fired Drum and Tube: 200 – 6,000 MBH
 - Indirect Fired Convoluted Tube: 75 – 1,200 MBH
 - 90% Efficient Indirect Fired: 250 – 1,600 MBH
- Rooftop Units (8 – 250 Tons)
 - Highly Configurable
 - Heating Options: Indirect Gas, Electric, Steam and Hydronic
 - Cooling Options: Hydronic and DX (Packaged Up to 160 Tons and Split Up to 250 Tons)
 - Energy Recovery Options



SolutionAir
www.solutionairgroup.com

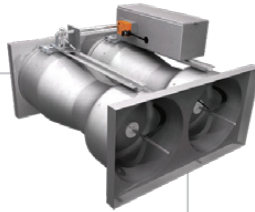
- RegenCore Alternating Mass-Exchanger Energy Recovery Units
 - No Pre-Heat Requirements Down to Outdoor Temperatures of -40°C
 - Up to 92% Effectiveness

LABORATORY

PRODUCT APPLICATION

Supply Venturi Valves

- Medium (0.6 to 3.0 in.w.c.) or low (0.3 to 3.0 in.w.c.) pressure operation
- High-speed actuation
- Characterized and calibrated using NVLAP accredited test stations (Lab Code: 201067-0)
- Operating pressure feedback



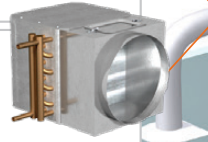
Pace™

- Pressure or volumetric offset control strategies
- Airflow control utilizing Venturi Valves, Venturi FX Valves or Terminal Units
- High speed room level network for communication to Pace and FHC controllers
- BACnet MS/TP



Integrated Reheat Coil

- Factory mounted transition
- Coil access door



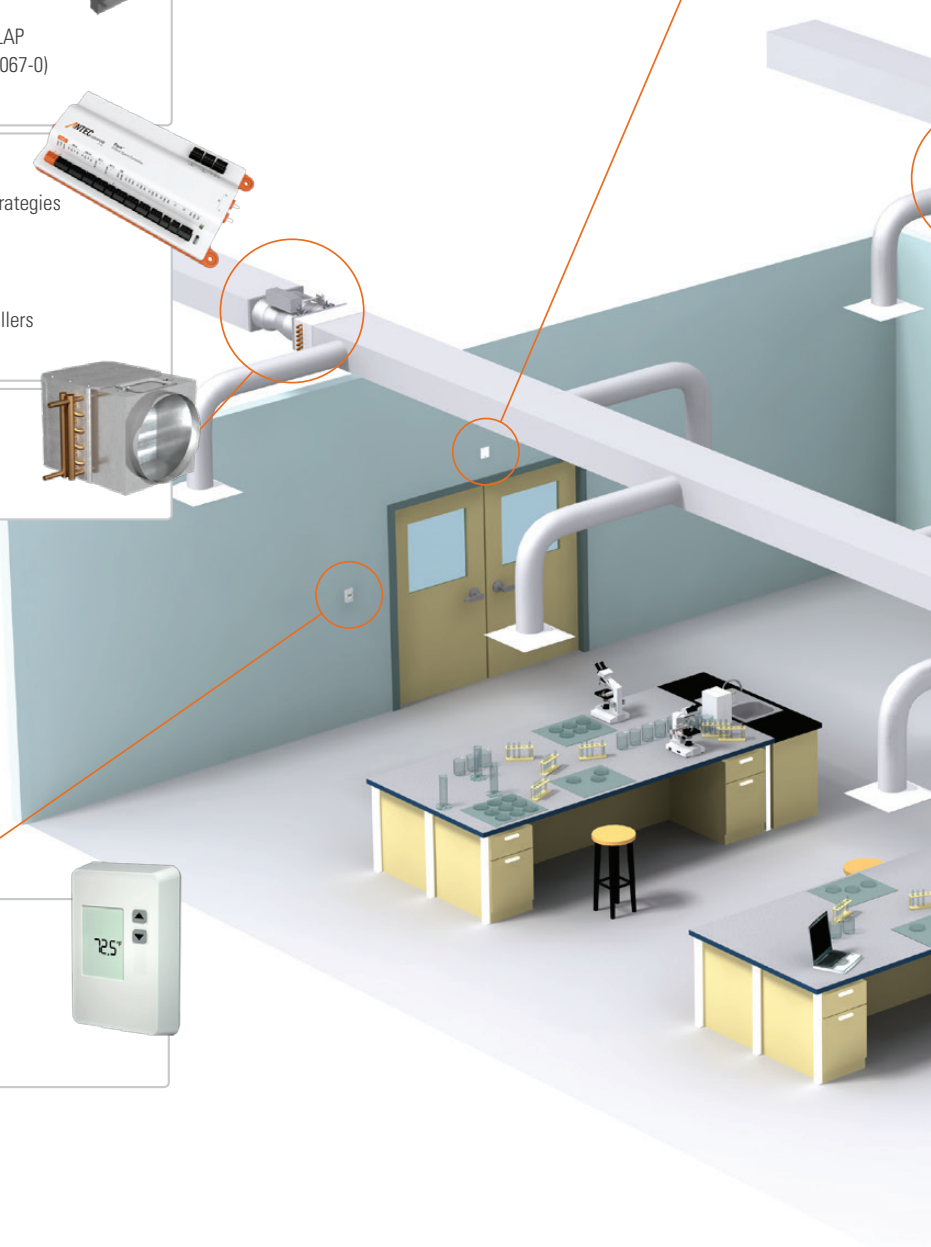
Room Pressure Sensor

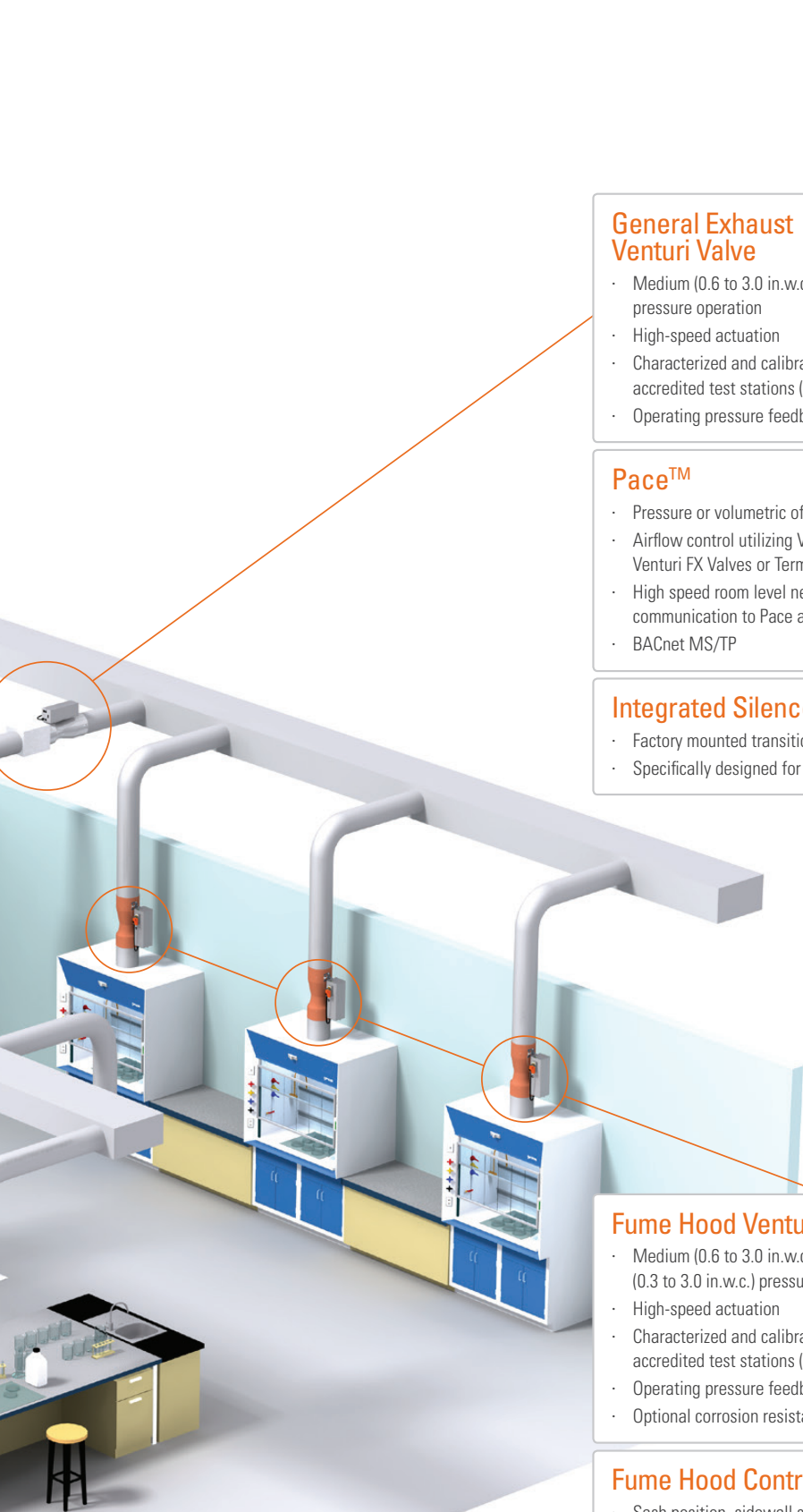
- Maintenance and calibration-free sensor technology
- Accurate to 3% of reading
- Designed to prevent buildup of airborne particulates



Thermostat

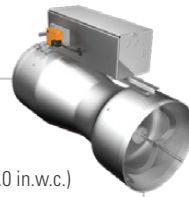
- LCD or blank-face options
- Optional humidity or CO₂ sensing
- Optional connection to room level network for commissioning





General Exhaust Venturi Valve

- Medium (0.6 to 3.0 in.w.c.) or low (0.3 to 3.0 in.w.c.) pressure operation
- High-speed actuation
- Characterized and calibrated using NVLAP accredited test stations (Lab Code: 201067-0)
- Operating pressure feedback



Pace™

- Pressure or volumetric offset control strategies
- Airflow control utilizing Venturi Valves, Venturi FX Valves or Terminal Units
- High speed room level network for communication to Pace and FHC controllers
- BACnet MS/TP



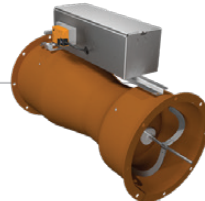
Integrated Silencer

- Factory mounted transition
- Specifically designed for Venturi Valves



Fume Hood Venturi Valve

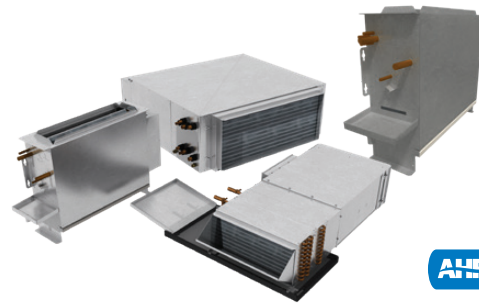
- Medium (0.6 to 3.0 in.w.c.) or low (0.3 to 3.0 in.w.c.) pressure operation
- High-speed actuation
- Characterized and calibrated using NVLAP accredited test stations (Lab Code: 201067-0)
- Operating pressure feedback
- Optional corrosion resistant coatings



Fume Hood Controller

- Sash position, sidewall sensor or combination face velocity control
- High speed response
- LCD fume hood interface
- Connection to room level network





price | BEAMS

Price Industries Limited
www.priceindustries.com

- Chilled Beams
 - Linear, Modular, Horizontal, Vertical and Floor-Mounted Active
 - Linear Passive
 - Passive with Integrated Returns
 - Controls and Hose Kits
- Retrofit Perimeter Induction Units

price | FAN COILS

Price Industries Limited
www.priceindustries.com

- High Performance Fan Coils
 - Optional Integrated Silencer
 - Standard ECM Motor
- Horizontal Blower Coils
- Vertical Fan Coils
 - Concealed and Exposed

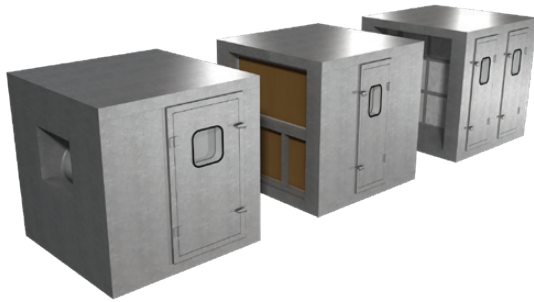


Bry-Air
www.bry-air.com

- MiniPac®
 - Standard Sizes of 100 – 1,800 CFM Process Air
 - Fully Self-Contained Unitary Design
 - Insulated Process and React Airflow Sectors
 - Dry Desiccant Rotor with Stainless Steel Flange
 - Electric Reactivation Heat System
 - Integral Volume Dampers
 - ETL Listed System Design
 - Integrated Control System
 - Optional Humidistat Control
 - Optional Pre and Post Cooling Modules
 - Optional Stainless Steel Construction

- VFB™ and EcoDry Series
 - Standard Sizes of 300 – 30,000 CFM Process Air
 - Single or Double Wall Construction
 - Dry Desiccant Rotor with Chain Drive
 - Direct Drive Fans with Premium Motors
 - Chilled Water, Ammonia or Packaged DX Pre or Post Cooling
 - Steam, Electric or Gas Heating and Regen Options
 - Hinged Access Doors
 - Lights and Miscellaneous Power Options
 - VFD Fan Motor Control Optional
 - Reactivation Energy Recovery Options

® and ™ Trademarks of Bry-Air (Asia) Pvt. Ltd.



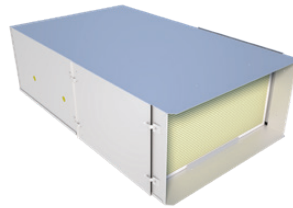
Racan-Carrier
www.racan.ca

- Custom Air Handling Solutions for Retrofit and New Construction
- Central Station Air Handlers
- Air Handlers in Any Configuration
- Knock-Down AHU Construction Heating, Cooling and Heat Recovery Capabilities
- Fan Array
- Integrated Controls



Zehnder Rittling
www.zehnder-rittling.com

- Wall-Fin Radiation
- Convector
- Cabinet Unit Heaters
- Unit Heaters
- Radiant Ceiling Panels
- Panel Radiators
- Standard and High Capacity Fan Coils
- Vertical Hi-Stack Fan Coils
- Induction Units
- Water Source Heat Pumps



Price Industries Limited
www.priceindustries.com

RAP: Room Air Purifier

- Rapid purification for high density areas
- UL 2998 and UL 867 certified
- Simple plug and play design
- Optional bipolar ionization and UV light treatment

OAP: Overhead Air Purifier

- Premium installation flexibility
- Quiet air purification solution
- Ceiling mounted design to save valuable floor space
- Optional bipolar ionization and UV light treatment

CAP: Ceiling Air Purifier

- Ceiling concealed with ultra quiet operation
- Motion sensor for maximum efficiency
- Smart Replacement Filter Indicator
- No modifications to existing HVAC system required

PURAFLO: Commercial Fan Filter Unit

- Cleanroom-grade HEPA filtration
- Easy to install with no impact on existing HVAC
- Floor mount for immediate use or ceiling mount for permanent solution
- Dual-outlet reverse flow configuration able to increase air change rate and create negative room pressure

CARES: Critical Area Recirculation/Exhaust Systems

- Part of the Pandemic-Ready Patient Room solution that converts a standard patient room to a negative pressure isolation room at the touch of a button
- Combines a reverse flow Fan Filter Unit (with HEPA) and a one-way, radial diffuser to manage airflow for an entire patient room



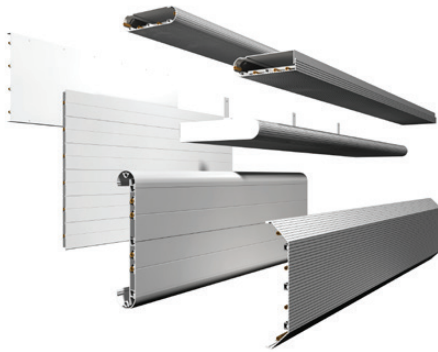
Unisorb Canada
www.unisorb.ca

- Specialists in Air and Gas Purification
- Corrosion and Odor Control
- Environmental Emission Control
- Personnel Protection



Franklin Control Systems
www.franklin-controls.com

- HVAC Specialty Products
 - Building Automation Starters
 - Standard Automation Starters
 - Cooling Tower Controls
 - Kitchen Hood Controls
 - Pump and HVAC Controls
- Industrial Products
 - Contactors and Overload Relays
 - Manual Motor Starters
 - Circuit Breakers
 - Starters
 - Soft Starters
 - Soft Starters with Integrated Bypass



- Programmable Logic Controllers
- Terminal Blocks
- Pilot-Devices
- Enclosures



Twa Panel Systems
www.twapanel.com

- Radiant Panels
- Chilled Sails
- Active Beams
- Induction Units
- Available With:
 - Hydronic Controls
 - Condensate Sensors
 - Hose Kits



Armstrong Monitoring
www.armstrongmonitoring.com



Ebacusa
www.ebacusa.com

- CO₂ and Refrigerant Monitoring Systems

- Industrial Dehumidifiers
- Water Damage Restoration and Drying Equipment
- Cooling and Ventilation Equipment
- Desiccant Dehumidifiers



TAMCO
www.tamco.ca



Lifebreath
www.lifebreath.com

- Premium Quality:
 - Thermally Insulated / Thermally Broken Frame Control Dampers
 - Aluminum Air-Foil Control Dampers
 - High Quality Aluminum Backdraft Dampers
 - Aluminum Louvers

- Inline Fans
- Heat Recovery Ventilators
- Turbulent Flow Precipitators
- Clean Air Furnace



COMMERCIAL GAS FIRED

Make-Up Air Units

HVAC Products and Services for the Commercial Sector

Gas fired make-up air units and air handling units are used throughout the warehouse, transportation garage, restaurant, and manufacturing industries.

The rigorous demands of these applications form the backbone of the Commercial Gas Fired Make-Up Air Series of products. Contractors, engineers and building owners are challenged daily with HVAC construction, design and performance – both in new and retrofit applications. Designers must meet stringent requirements regarding energy efficiency, indoor air quality (IAQ) standards, and life cycle cost. To meet these challenges, SolutionAir has developed the PMI-IF, AW-I, and AW-D series of gas fired make-up air units.

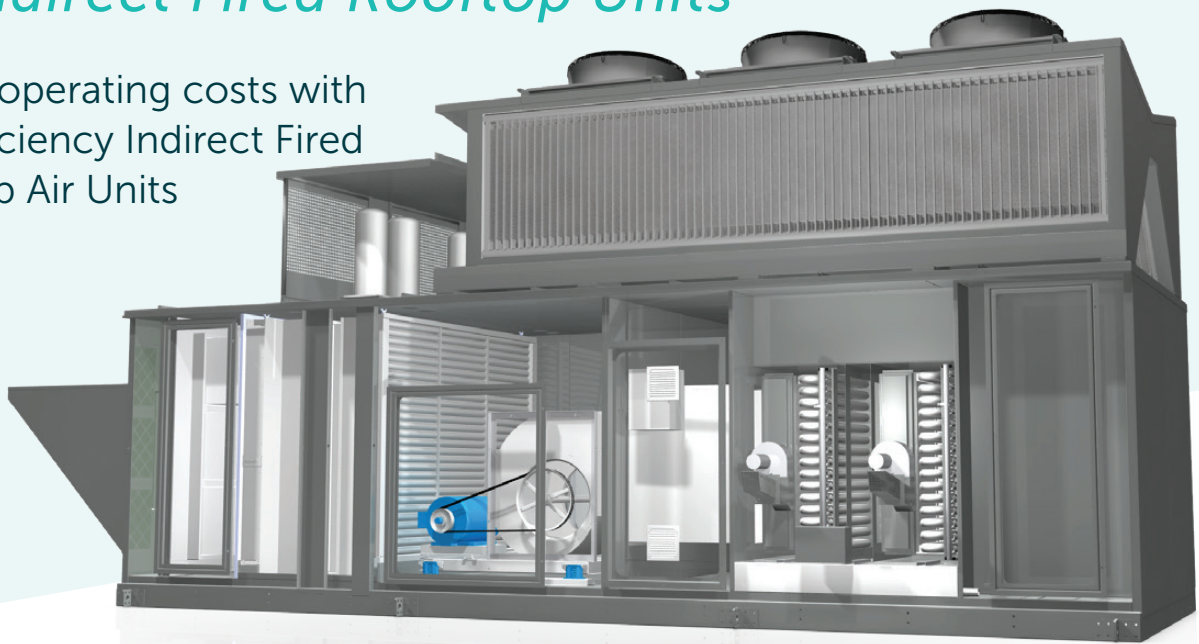


Visit solutionairgroup.com or call **1.204.633.4808**

90% EFFICIENT FURNACE

For Indirect Fired Rooftop Units

Reduce operating costs with high efficiency Indirect Fired Make-Up Air Units



PMI-IF series

The PMI-IF series is an indirect fired unit that utilizes a standard (80% efficient) or an optional high efficiency (90% efficient) stainless steel convoluted tube heat exchanger. By separating combustion air from the supply air, the unit is able to maintain excellent indoor air quality (IAQ). These units can be used in schools, offices, and institutional projects – anywhere that IAQ is paramount. The convoluted tube furnace is one of the most cost effective indirect fired designs.



AW-I series

For demanding indirect fired applications, SolutionAir offers the AW-I series with a three pass stainless steel drum and tube heat exchanger. The robust heat exchanger was designed to be incredibly reliable.



AW-D Series

For applications requiring a large volume of 100% outdoor air, the AW-D series offers a direct-fired alternative. The unit incorporates a high efficiency burner, which is capable of a high turndown ratio, maximizing discharge air temperature control with minimal combustion by-products.





e.h.price

First in Quality, First in Service

E.H. PRICE TORONTO

571 Chrislea Road, Unit 1

Woodbridge, ON L4L 8A2

Ph: 905.669.8988 Fax: 905.669.8023

Email: toronto@ehpricesales.com

Website: www.ehpricetoronto.com

Local Delivery Available • Contact your E.H. Price Sales Representative for more information

LONDON

2351 Huron Street, Unit #6
 London, Ontario
 N5V 3K4
 Ph: 519.451.5100
 Fax: 519.451.8726
london@ehpricesales.com
www.ehpricesouthwesternontario.com

CAMBRIDGE

75 Saltsman Drive, Unit #8
 Cambridge, Ontario
 N3H 4R7
 Ph: 519.653.9470
 Fax: 519.653.7853
cambridge@ehpricesales.com
www.ehpricesouthwesternontario.com

HAMILTON

70 Unsworth Drive, Unit #11
 Hamilton, Ontario
 L8W 3K4
 Ph: 905.383.3599
 Fax: 905.383.1274
hamilton@ehpricesales.com
www.ehpricehamilton.com

OSHAWA

500 Wentworth Street East, Unit #12
 Oshawa, Ontario
 L1H 3V9
 Ph: 905.669.8988
 Fax: 905.669.8023
oshawa@ehpricesales.com
www.ehpriceoshawa.com

OTTAWA

3236 Hawthorne Road
 Ottawa, Ontario
 K1G 3W9
 Ph: 613.725.2029
ottawa@ehpricesales.com
www.ehpriceottawa.com

SUB REP - SUDBURY & N.E. ONTARIO

Jack Dougan Associates
 74 Mumford Drive
 Lively, Ontario
 P3Y 1H9
 Ph: 705.692.5838
 Fax: 705.692.5685
www.jdaltd.ca

SUB REP - WINDSOR

LK Metal Products Co. Limited
 1595 Lincoln Road
 Windsor, Ontario
 N8Y 2J3
 Ph: 519.256.1861
 Fax: 519.256.2828
mail@lkmatal.com
www.lkmatal.com